

Counter-top Flake Ice Maker

- The first antibacterial ice maker in the industry
- Significant saving on ice-making cost
- Compact structure with minimum space requirement
- Unit top can be used as a convenient work surface

SIM-F140



Ice-Making Capacity

Approx. **125kg/day**

Ambient Temperature 20°C
Water Temperature 15°C (50Hz)

SIM-F140

Features

- **The first antibacterial ice maker in the industry**

Antibacterial materials are used in the ice maker's parts that may come into contact with human hands, such as the door handle, ice shovel, ice storage chamber and water storage chamber. Antibacterial stainless steel is also used to prevent corrosion, and the door gasket contains a mold-proof compound that can suppress the formation of mold.

- **Significant saving on ice-making cost**

The unique triple control technique developed by SANYO, which includes micro-computer control, residual water dilution control and water level control, helps reduce water consumption significantly and improve ice-making capacity, leading to the most dramatic cost saving ever achieved in the industry.

- **Unit top functions as work surface**

This compact and versatile ice maker takes up minimal installation space with a top that functions as a convenient work surface.

Specifications

Model	SIM-F140
Exterior dimensions (W x D x H)	600 x 600 x 800 (mm)
Ice shape	Flake
Ice-making method	Auger type (formed on the inner surface of the cylinder)
Ice-making capacity (Approx.)	125 kg/day (Ambient temp. 20°C, Water temp. 15°C)
	110 kg/day (Ambient temp. 30°C, Water temp. 25°C)
Water consumption (Approx.)	0.15 m ³ /day (Ambient temp. 20°C, Water temp. 15°C)
	0.14 m ³ /day (Ambient temp. 30°C, Water temp. 25°C)
Operating temperature range	5 – 35°C
Material	Front/side/top
	Rear
	Interior
	Insulation
Ice storage capacity (Approx.)	29 kg (64 lbs.) [natural drop*: 20 kg (44 lbs.)]
Compressor	Hermetic type, output 300W, rotary
Refrigerant	R404A
Power supply	220V, 50Hz, 1-phase
Rated power consumption	370W
Water supply port	R1/2
Ice-making unit drain port	R3/4 (Ice generator), Outer diameter 26 mm (Ice storage)
Legs	4 adjustable (70 to 105 mm)
Net weight	Approx. 69 kg (152 lbs.)
Serviceability	Pull-out cooling unit
Alarm	Microprocessor controlled
Shipping dimensions (W x D x H)	695 x 729 x 823 (mm)
Accessories	Scoop with holder (1), Strainer (1), Stainless flexible water supply tube (G1/2-nut, L600), Stainless flexible unit drain tube (G3/4-nut, L600), Flexible ice storage compartment drain hose (inner diameter ø25, L100)

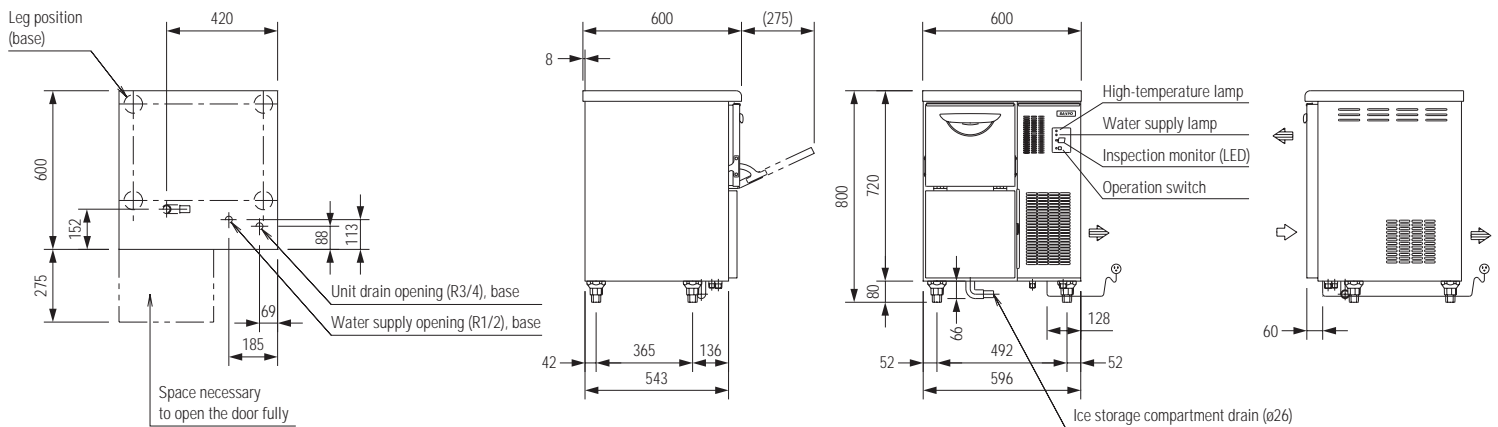
Note: Appearance and specifications are subject to change without notice.

* "Natural Drop" above refers to the amount of flake ice when a sensor is activated after 1/3rd of the ice has been delivered.

Upper bearing and mechanical seal need to be replaced regularly:

With a service life of about 3 years after installation or 18000 hours of operation, the upper bearing and mechanical seal of the ice maker need to be replaced at regular intervals. For its replacement please contact SANYO distributor.

Dimensions Unit: mm



Distributed by:

SANYO

SANYO Electric Biomedical Co., Ltd.

SANYO Sales & Marketing Corporation

5-15, Hiyoshi-cho 2-chome, Moriguchi City, Osaka, 570-8634, Japan

Telephone: +81-6-6992-0322 Fax: +81-6-6992-9221

URL <http://www.sanyo-biomedical.co.jp/>

©2005 SANYO Printed in Japan 2005.8. MA. SHR097